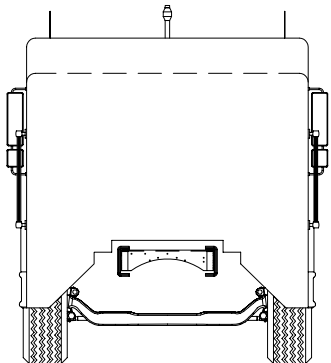
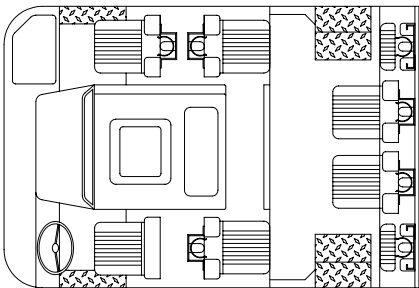


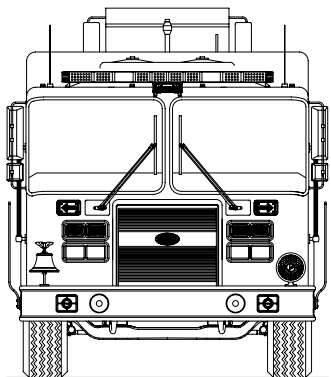
REAR VIEW



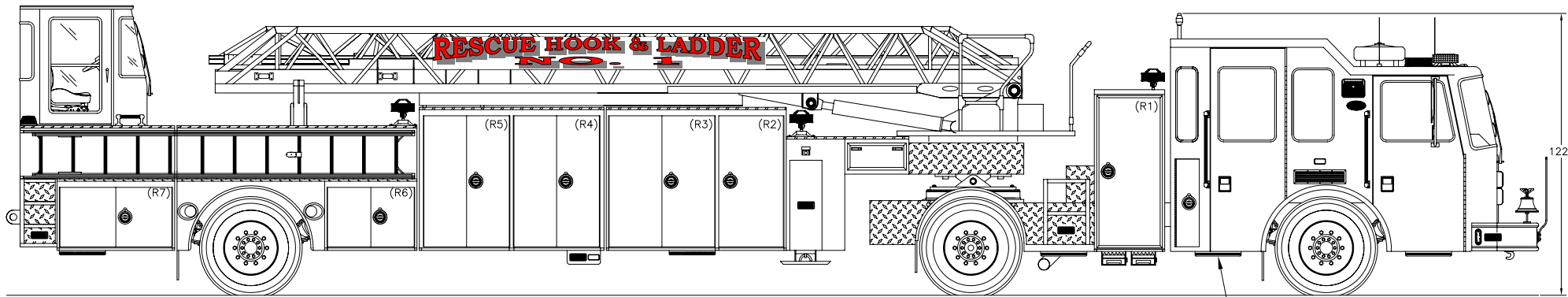
REAR VIEW OF CAB



CAB INTERIOR LAYOUT

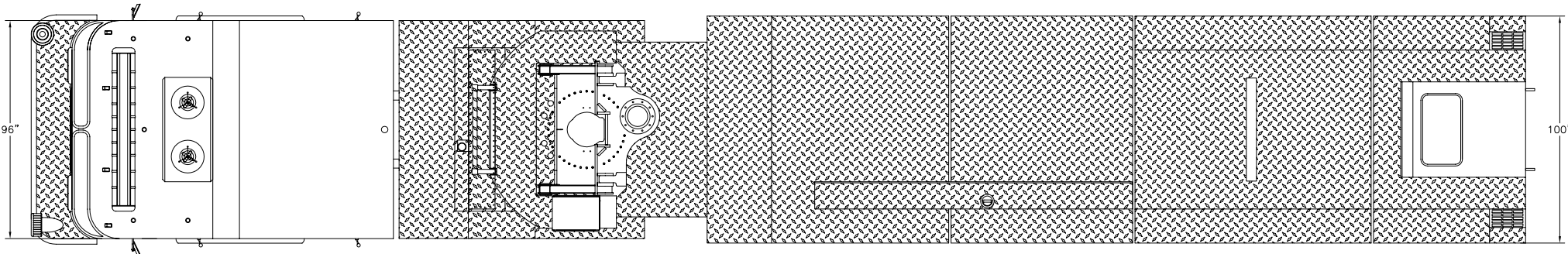


FRONT VIEW

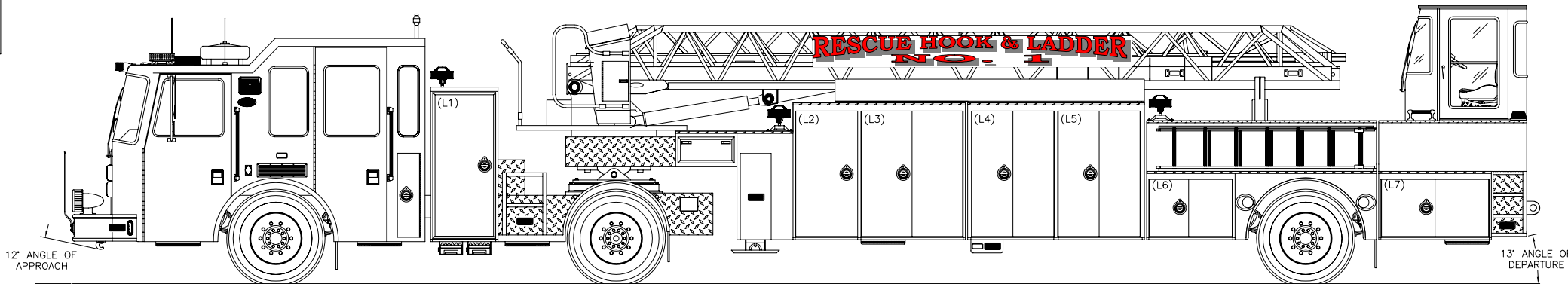


OFFICERS SIDE VIEW

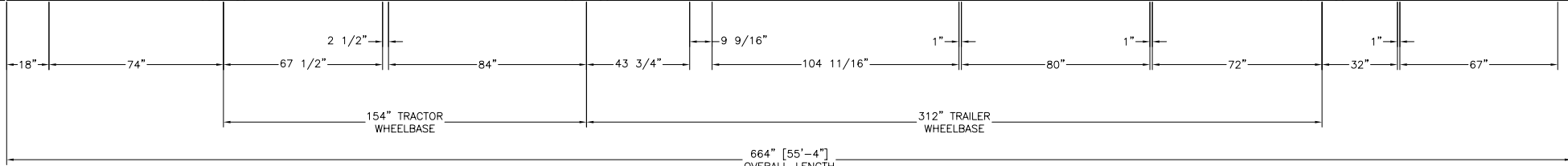
LUMA-BAR H2O GROUND LIGHTS



TOP VIEW



DRIVERS SIDE VIEW



SPECIFICATIONS

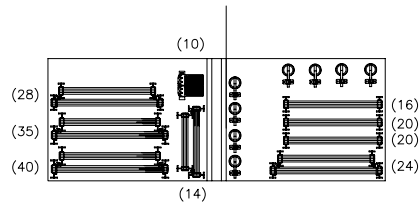
CHASSIS: PREDATOR LFD w/ 12" RAISED ROOF
ENGINE: CUMMINS ISM - 500HP w/ ENGINE BRAKE
TRANSMISSION: ALLISON 4000EVS 5-SPEED AUTOMATIC
FRONT AXLE: MERITOR MFS-20-133A-N; #21,480
REAR AXLE: MERITOR RS-30-185; #31,000
TRAILER AXLE: MERITOR FL-943; #22,000
PUMP: N/A
TANK: N/A

COMPARTMENT SIZE

LETTER	COMPARTMENT SIZE	TRANSVERSE	DOOR OPENING
L1	30.5W X 70H X 24D	NONE	26W X 67H
L2	30W X 62H X 28D	UPPER & LOWER	26W X 55H
L3	48W X 62H X 28D	LOWER	44W X 55H
L4	40W X 62H X 28/15D	LOWER	36W X 55H
L5	40W X 62H X 28/15D	LOWER	36W X 55H
L6	40W X 31H X 28D	NONE	36W X 28H
L7	51W X 31H X 28D	NONE	47W X 28H
R1	30.5W X 70H X 24D	NONE	26W X 67H
R2	30W X 62H X 28D	UPPER & LOWER	26W X 55H
R3	48W X 62H X 28D	UPPER & LOWER	44W X 55H
R4	40W X 62H X 28/15D	LOWER	36W X 55H
R5	40W X 62H X 28/15D	LOWER	36W X 55H
R6	40W X 31H X 28D	NONE	36W X 28H
R7	51W X 31H X 28D	NONE	47W X 28H
B1	26W X 26.5H X 28D	NONE	24W X 24.5H
B2	12.5W X 26.5H X 15D	NONE	10.5W X 24.5H

GROUND LADDERS

- 1 - DUO-SAFETY 40' 2-SECTION; 500-C
- 1 - DUO-SAFETY 35' 2-SECTION; 500-C
- 1 - DUO-SAFETY 28' 2-SECTION; 500-C
- 1 - DUO-SAFETY 24' 2-SECTION; 500-C
- 2 - DUO-SAFETY 20' ROOF w/ FOLDING HOOKS; 575-C
- 1 - DUO-SAFETY 16' ROOF w/ FOLDING HOOKS; 575-C
- 1 - DUO-SAFETY 14' COMBINATION LADDER; 35-B
- 1 - DUO-SAFETY 10' FOLDING; 585-A
- 1 - ALACO WX071392 24' 2-SECTION WOODEN LADDER



ENLARGED TO SHOW BANKING DETAIL

THIS DRAWING IS A GENERAL CONFIGURATION AND MAY NOT
NECESSARILY REFLECT ALL CONTRACTUAL OBLIGATIONS
PLEASE REVIEW AND RETURN A SIGNED COPY.

NAME: _____
TITLE: _____
DATE: _____

CUSTOMER PAINT CODES

LOWER CAB AND BODY: PPG RED #71528

CAB TWO TONE: PPG METALLIC SILVER #FTB36847B

LADDER: PPG WHITE #8000

COMPARTMENT INTERIOR: ZOLATONE MARBLE WHITE

C	02/25/10	REVISED AS PER MARKED UP PRINT	MAB
B	02/17/10	REVISED TO FPR	MAB
A	12/18/09	REVISED TO QVF	MAB
REV	DATE	REVISION DESCRIPTION	APP'D

SALES ENGINEER : MARK BOYLE



KME FIRE APPARATUS

ONE INDUSTRIAL COMPLEX
NESQUEHONING, PA 18240

DATE	SCALE	DRAWN BY:	S. HEISER
17NOV09	NONE	APPROVED BY:	PPH

100' AERIALCAT TRACTOR DRAWN AERIAL

VILLAGE OF HAVERSTRAW, NY

GSO #7933

THIS DRAWING IS THE PROPERTY
OF KME. DO NOT COPY OR USE
FOR ANY OTHER PROJECT
WITHOUT KME'S WRITTEN
PERMISSION.

DO NOT CHANGE MANUALLY